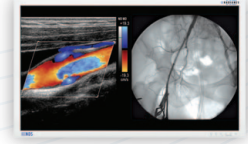
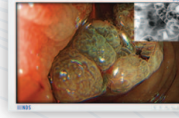


RADIANCE® FULL MMI™ VISUALIZATION SYSTEMS - TECHNICAL SPECIFICATIONS



RADIANCE® 19 HD
Full MMI™

RADIANCE® 24 HD
Full MMI™

RADIANCE® 26 HD
Full MMI™

RADIANCE® 32 HD
Full MMI™

RADIANCE® 42 HD
Full MMI™

RADIANCE® 55 HD
Full MMI™ ZW

IMAGE PERFORMANCE						
Viewable Area (Diagonal)	19 inches (483 mm)	24 inches (610 mm)	25.5 inches (649 mm)	31.5 inches (801 mm)	42 inches (1067 mm)	54.6 inches (1388 mm)
Native Resolution (H x V)	1280 x 1024 (SXGA)	1920 x 1200 (WUXGA)	1920 x 1200 (WUXGA)	1920 x 1080 (Full HD)	1920 x 1080 (Full HD)	1920 x 1080 (Full HD)
Luminance (Max)	300 cd/m ²	400 cd/m ²	500 cd/m ²	500 cd/m ²	500 cd/m ²	500 cd/m ²
Contrast Ratio (Typical)	600:1	1000:1	800:1	1300:1	1300:1	1300:1
Aspect Ratio	5:4	16:10	16:10	16:9	16:9	16:9
Response Time	10 - 16 ms		5 - 12 ms		6 - 9 ms	
LCD Panel	Active Matrix a-Si TFT, With In Plane Switching					Active a-Si TFT, w/ IPS and LED Backlight
Special Features	Full Multi-Modality Imaging					Embedded *ZeroWire® Receiver, 240 Hz
Number of Colors	16.8 Million			1.06 Billion		1.06 Billion
Viewing Angle	178° (Horizontal & Vertical)					
Gamma	1.8, 2.0, 2.2, 2.4, 2.6, Color-Corrected Video Gamma, PACS (DICOM)					
GENERAL						
Standard Product P/N	90R0035 (No Fiber)	90R0022 (Fiber), 90R0019 (No Fiber)	90R0030 (Fiber), 90R0029 (No Fiber)	90R0034 (Fiber), 90R0033 (No Fiber)	90R0036 (Fiber)	TBD
Optional Touch Screen	Resistive (Serial Interface)	Resistive (Serial Interface)	N/A	N/A	N/A	IR (USB or Serial Interface)
Power Input	24VDC; Consumption: 65 W	24VDC; Consumption: 115 W	24VDC; Consumption: 115 W	24VDC; Consumption: 120 W	100 - 240VAC; Consumption: 240 W	100 - 240VAC; Consumption: 315 W
Weight	15 lbs (6.8 kg)	16.1 lbs (7.3 Kg)	18.1 lbs (8.2 kg)	31 lbs (14.1 kg)	66 lbs (30 kg)	100 lbs (45.5 kg)
Mounting	100 mm VESA	100 mm VESA	100 mm VESA	300 x 100 mm VESA	300 x 100 mm VESA	500 x 100 mm VESA
Dimensions (H x W x D)	18 x 16 x 4 in (465 x 400 x 98 mm)	23.5 x 15.8 x 4 in (597 x 401 x 100 mm)	24.7 x 16.8 x 3.95 in (627 x 427 x 101 mm)	31 x 19 x 4 in (780 x 470 x 94 mm)	40.5 x 24.9 x 4.7 in (1030 x 633 x 119 mm)	53.3 x 30.3 x 4.9 in (1352 x 769 x 126 mm)
INPUTS						
HD-SDI	BNC, 75 Ω	BNC, 75 Ω	BNC, 75 Ω	BNC, 75 Ω	BNC, 75 Ω	BNC, 75 Ω
HD-SDI (2)	BNC, 75 Ω	BNC, 75 Ω	BNC, 75 Ω	BNC, 75 Ω	BNC, 75 Ω	BNC, 75 Ω
DVI, Fiber, ZeroWire®	DVI-D	DVI-D or LC x 4	DVI-D or LC x 4	DVI-D or LC x 4	DVI-D or LC x 4	DVI-D or LC x 4 or *ZeroWire® Input
DVI (2)	DVI-I	DVI-I	DVI-I	DVI-I	DVI-I	DVI-I
RGBS, Y _P , P _P	BNC x 5 or DVI-I(2), 0.7 Vp-p ± 6db, 75 Ω	BNC x 5 or DVI-I(2), 0.7 Vp-p ± 6db, 75 Ω	BNC x 5 or DVI-I(2), 0.7 Vp-p ± 6db, 75 Ω	BNC x 5 or DVI-I(2), 0.7 Vp-p ± 6db, 75 Ω	BNC x 5 or DVI-I(2), 0.7 Vp-p ± 6db, 75 Ω	BNC x 5 or DVI-I(2), 0.7 Vp-p ± 6db, 75 Ω
S-Video	DIN-4 or BNC x 2 (Y & C), 0.7 Vp-p +6/-3db, 75 Ω	DIN-4 or BNC x 2 (Y & C), 0.7 Vp-p +6/-3db, 75 Ω	DIN-4 or BNC x 2 (Y & C), 0.7 Vp-p +6/-3db, 75 Ω	DIN-4 or BNC x 2 (Y & C), 0.7 Vp-p +6/-3db, 75 Ω	DIN-4 or BNC x 2 (Y & C), 0.7 Vp-p +6/-3db, 75 Ω	DIN-4 or BNC x 2 (Y & C), 0.7 Vp-p +6/-3db, 75 Ω
Composite	BNC, 0.7 Vp-p +6/-3db, 75 Ω	BNC, 0.7 Vp-p +6/-3db, 75 Ω	BNC, 0.7 Vp-p +6/-3db, 75 Ω	BNC, 0.7 Vp-p +6/-3db, 75 Ω	BNC, 0.7 Vp-p +6/-3db, 75 Ω	BNC, 0.7 Vp-p +6/-3db, 75 Ω
Sync-On-Green (SOG)	BNC, 75 Ω	BNC, 75 Ω	BNC, 75 Ω	BNC, 75 Ω	BNC, 75 Ω	BNC, 75 Ω
VGA	HD-15, or BNC x 5, or DVI-I(2), 0.7 Vp-p ± 6db, 75 Ω	HD-15, or BNC x 5, or DVI-I(2), 0.7 Vp-p ± 6db, 75 Ω	HD-15, or BNC x 5, or DVI-I(2), 0.7 Vp-p ± 6db, 75 Ω	HD-15, or BNC x 5, or DVI-I(2), 0.7 Vp-p ± 6db, 75 Ω	HD-15, or BNC x 5, or DVI-I(2), 0.7 Vp-p ± 6db, 75 Ω	HD-15, or BNC x 5, or DVI-I(2), 0.7 Vp-p ± 6db, 75 Ω
CONTROL INPUTS						
Serial Remote	D-sub 9 pin, RS-232C	D-sub 9 pin, RS-232C	D-sub 9 pin, RS-232C	D-sub 9 pin, RS-232C	D-sub 9 pin, RS-232C	D-sub 9 pin, RS-232C
GPIO	RJH-4, TTL	RJH-4, TTL	RJH-4, TTL	RJH-4, TTL	RJH-4, TTL	RJH-4, TTL
ND-OS	Mini-USB	Mini-USB	Mini-USB	Mini-USB	Mini-USB	Mini-USB
OUTPUTS						
HD-SDI	BNC	BNC	BNC	BNC	BNC	BNC
RGBS, Y _P , P _P /VGA	BNC x 5 or DVI-I(2)	BNC x 5 or DVI-I(2)	BNC x 5 or DVI-I(2)	BNC x 5 or DVI-I(2)	BNC x 5 or DVI-I(2)	BNC x 5 or DVI-I(2)
S-Video	DIN-4	DIN-4	DIN-4	DIN-4	DIN-4	DIN-4
Composite /SOG	N/A	N/A	N/A	N/A	N/A	N/A
DVI	DVI-D	DVI-D	DVI-D	DVI-D	DVI-D	DVI-D
REGULATORY COMPLIANCE						
	UL 60601-1, EN 60601-1, EN 60601-2, MDD 93/42/EEC, CE, CAN/CSA C22.2 NO. 601.1, Class 1 Medical Device, RoHS, FCC Part 15					TBD



RADIANCE® DOME
ISO 9001:2000 & 13485:2003 Certified
FDA Registration # 2954921 & 1226517

North American Corporate Office
5750 Hellyer Avenue
San Jose, CA 95138 (USA)
Tel: 408 776 0085 Fax: 408 776 9878
Email: info@ndssi.com

U.S. East Coast Office
Dome Products
400 Fifth Avenue
Waltham, MA 02451 (USA)
Tel: 781 895 1155 Fax: 781 895 1133

European Offices
Nijverheidscentrum 28
2761 JP Zevenhuizen (ZH) The Netherlands
Tel: + 31 180 63 43 56 Fax: + 31 180 63 21 91
Email: info@ndssi.nl

Asia Pacific Offices
Takanawa Kaneo Bldg., 6F 3-25-22 Takanawa
Minato-ku Tokyo, Japan, 108-0074
Tel: + 81 3 5475 1835 Fax: + 81 3 5475 2835
Email: info@ndssi.jp

